

Girls' Camps, Tannadoonah and Thrushwood, Attract Hundreds Annually From South Bend

Young Women's First Outdoor Site Was Eberhart.

EDITOR'S NOTE: This is the second of a series of weekly articles, describing summer camps in northern Indiana and Michigan and the benefits derived from them by both children and adults in St. Joseph county.

Virgin landscape and the dancing waters of lakes and rivers throughout this region will extend a beckoning finger at boys and girls, men and women alike within the next few months.

Scenes from two of the favorite camping sites for South Bend girls and women accompany this article and depict in a measure the charm of the open spaces in southern Michigan where Camp Tannadoonah and Thrushwood are located.

Hundreds of South Bend Camp Fire Girls enjoy annual pilgrimages to Tannadoonah which nestles among the trees on the shore of Birch lake, near Vandalia, Mich. A true pioneer spirit motivated the 300 girls who spent the first three-week camping period at Pleasant lake, near Edwardsburg, Mich., in 1920.

Only Two Supervisors.

Equipped with a portable tent cottage and a small sum of money, a boat and a few kitchen utensils, these girls cooked and ate out of doors. One of the lots on which the camp was situated was donated by the Community fund, and the rest was purchased by Col. C. Seymour Bullock and C. W. Copp. Mrs. Bullock, then the executive, and a swimming instructor were the only supervisors during those first three weeks 14 years ago.

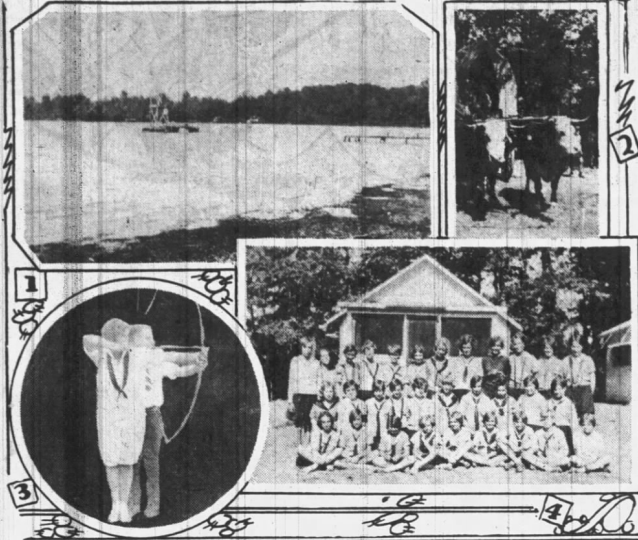
For 10 years, hundreds of Camp Fire Girls enjoyed the Pleasant lake camp, where permanent quarters had been erected and a pier and swimming raft installed. It was not until 1930 that Tannadoonah was moved to its present site on Birch lake. An old farm house at the top of a 100-foot bluff formed the nucleus of the new resort, and sleeping cabins were donated by the Exchange club, the Luta Koda Camp Fire group and the Rotary club. Water-front improvements were made by the Exchange club and Copp lodge was transferred to Birch lake from the original site.

Three Groups in Camp.

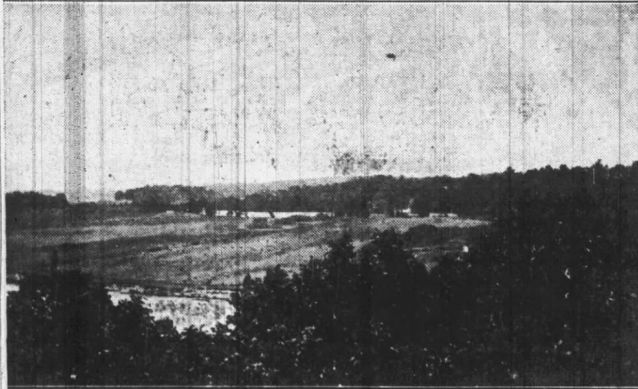
So rapidly has the popularity of Camp Tannadoonah grown that today there is a complete staff of camp counsellors, one for each seven girls, and the entire camp is divided into three groups—senior, junior and Blue Bird. Unforgettable days are spent each summer in the handcraft lodge, first aid cabin and on the tennis courts, baseball field and archery range. A new dining room and modern lavatory have been added so the equipment which forms the heart of a 13-acre tract of woods and hills.

Directors of the camp since 1920 have included Mrs. Bullock, Doris L. Bishop, Tyra Christianson, Mary C. Anderson and Kathleen Armstrong. Dorothy Brown will be the director for this year's camping season.

Camping history for South Bend girls and women, however, can be traced back to August, 1812, when



TYPICAL SCENES AT CAMP TANNADOONAH.



PANORAMIC VIEW OF THRUSHWOOD.

Camp Eberhart at Corey lake, near Three Rivers, Mich., was thrown open for the use of 17 feminine campers. No more popular spot for summer outings is located in this region, and the South Bend Y. W. C. A. has made constant and valuable use of the site and equipment for several weeks out of each year since the camp originated.

Witness the popularity of "roughing it" at Camp Eberhart: In 1914 the attendance increased to 30, in 1915 to 41, in 1916 to 53 and only last year 105 different girls enjoyed the open air and wholesome exercise available to those girls who seek to forget for a time the noise and bustle of

the city. Activities at Camp Eberhart begin at 7 o'clock in the morning and include boating, fishing, swimming, baseball and camp fires. All-day hikes are scheduled once each week. The 1933 program also includes tennis, canoeing, study of arts and crafts, creative dramatics, dancing and rifle practice.

Known as "the Y camp on the hill," Thrushwood is another favorite haven for feminine lovers of the "out-of-doors." Located on a high bank of the St. Joseph river near Niles, Mich., it commands a broad view over the rolling countryside and wooded sections for miles around. Thrushwood was purchased from

the Myron Campbell estate in 1921, for \$10,000, and has been used by the South Bend Y. W. C. A. as a week-end camp for business and industrial girls since that time. Its proximity to South Bend contributes much to its popularity and children from the Mishawaka Orphans' home, dispensary and church groups use it extensively during the summer months, along with parties of young business people who go there frequently for picnics and camp fires. The house, which serves as a dormitory and residence, was formerly the summer home of the Campbell family, and money for its purchase was raised by subscription from South Bend business men.